



Growing Forward

Colorado Population and Economic Trends

DRMAC

Elizabeth Garner

December 2019

State Demography Office, Department of Local Affairs

Demography.dola.colorado.gov



COLORADO
Department of Local Affairs

Transitions to Watch

- Population growing at a slowing rate
 - Slowing Births, increasing deaths, slower international mig.
- Concentrated growth
- Migration - why, who, impact.
- Aging - impacts everything... including the economy.
 - Labor force
- Increase racial and ethnic diversity.
- Industry transitions - retail, manufacturing, construction, transportation?



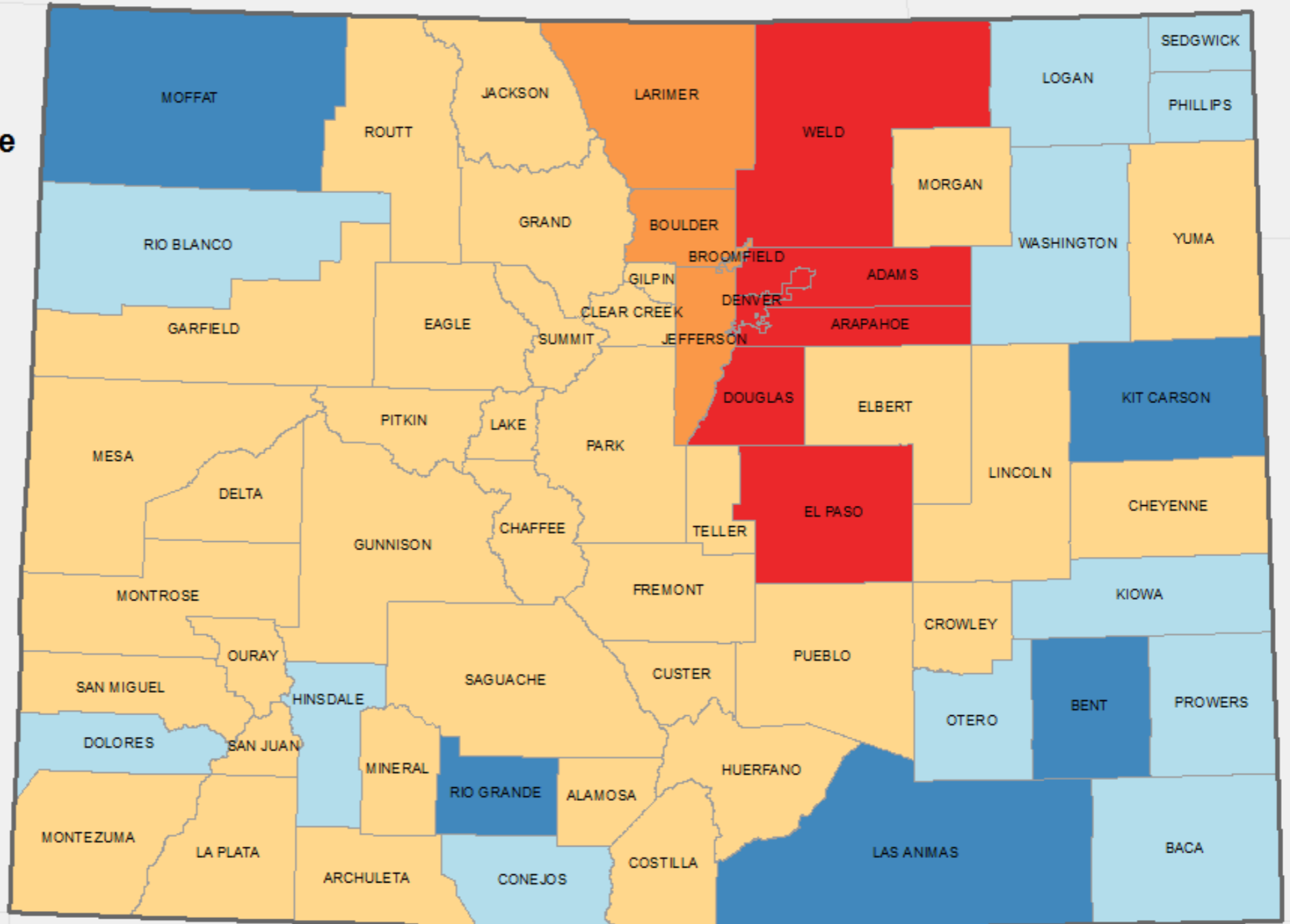
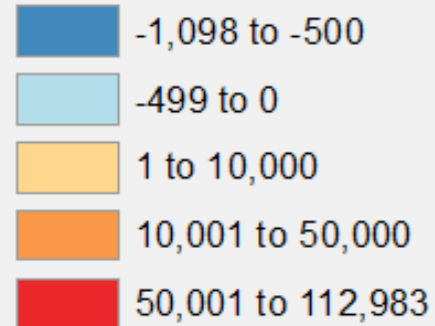
Big Picture - 2017-2018 Pop Change

- US - 327.2 million, + 2.02 million or .6%
- Colorado - 5,695,564
- Ranked 7th fastest 1.4% - NV, ID, UT, AZ, FL, WA
- 8th in total growth 77,744 - TX, FL, CA, AZ, NC, WA, GA
- Growth of 644,000 since 2010 and Average Annual Growth rate of 1.6% or 83,000/year



Colorado: Total Population Change 2010 - 2018

Population Change

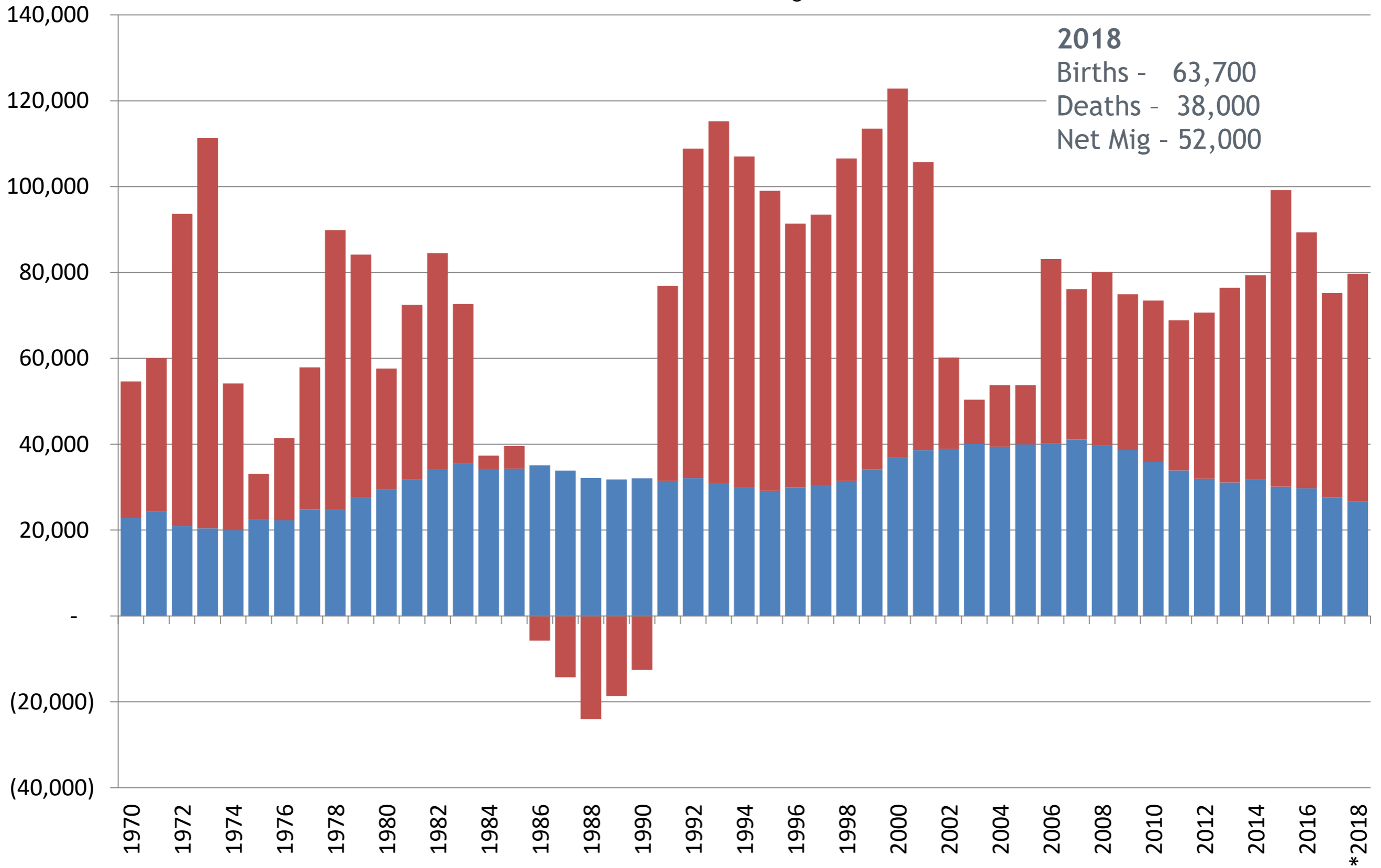


Colorado State Demography Office, 05/02/2019



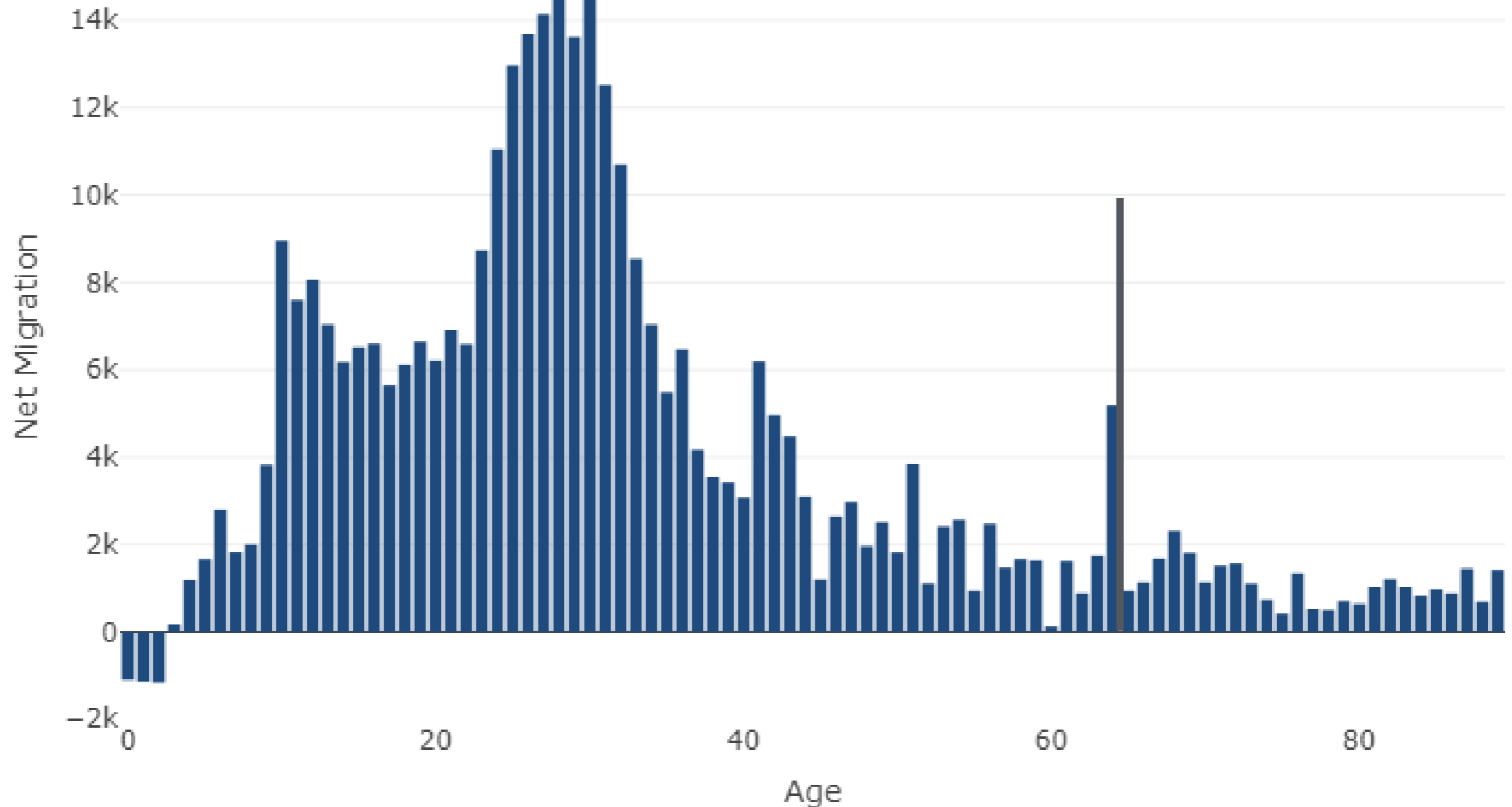
Components of Population Change 1970-2018

■ Natural Increase ■ Net Migration

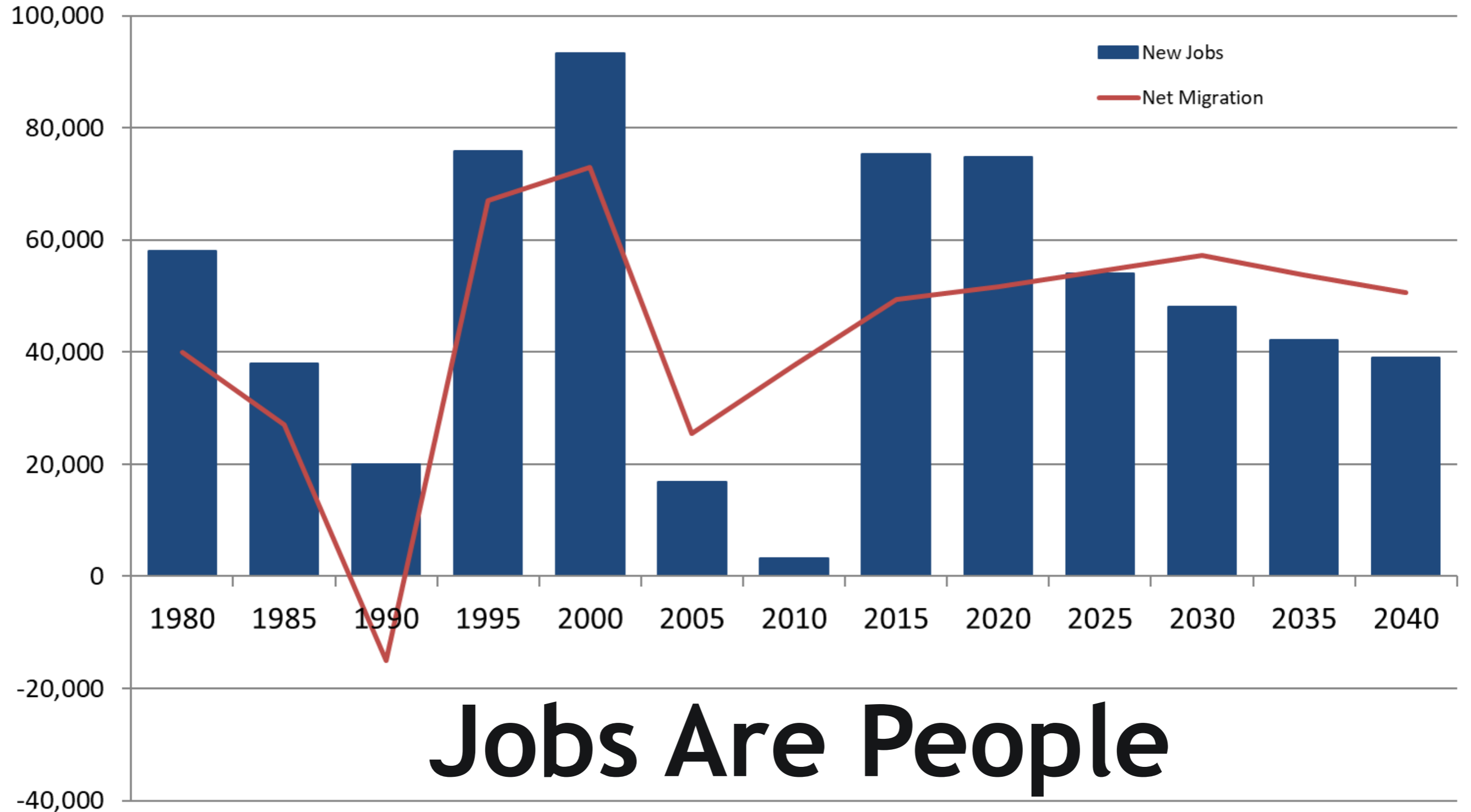


Colorado

Net Migration by Age, 2000 to 2010



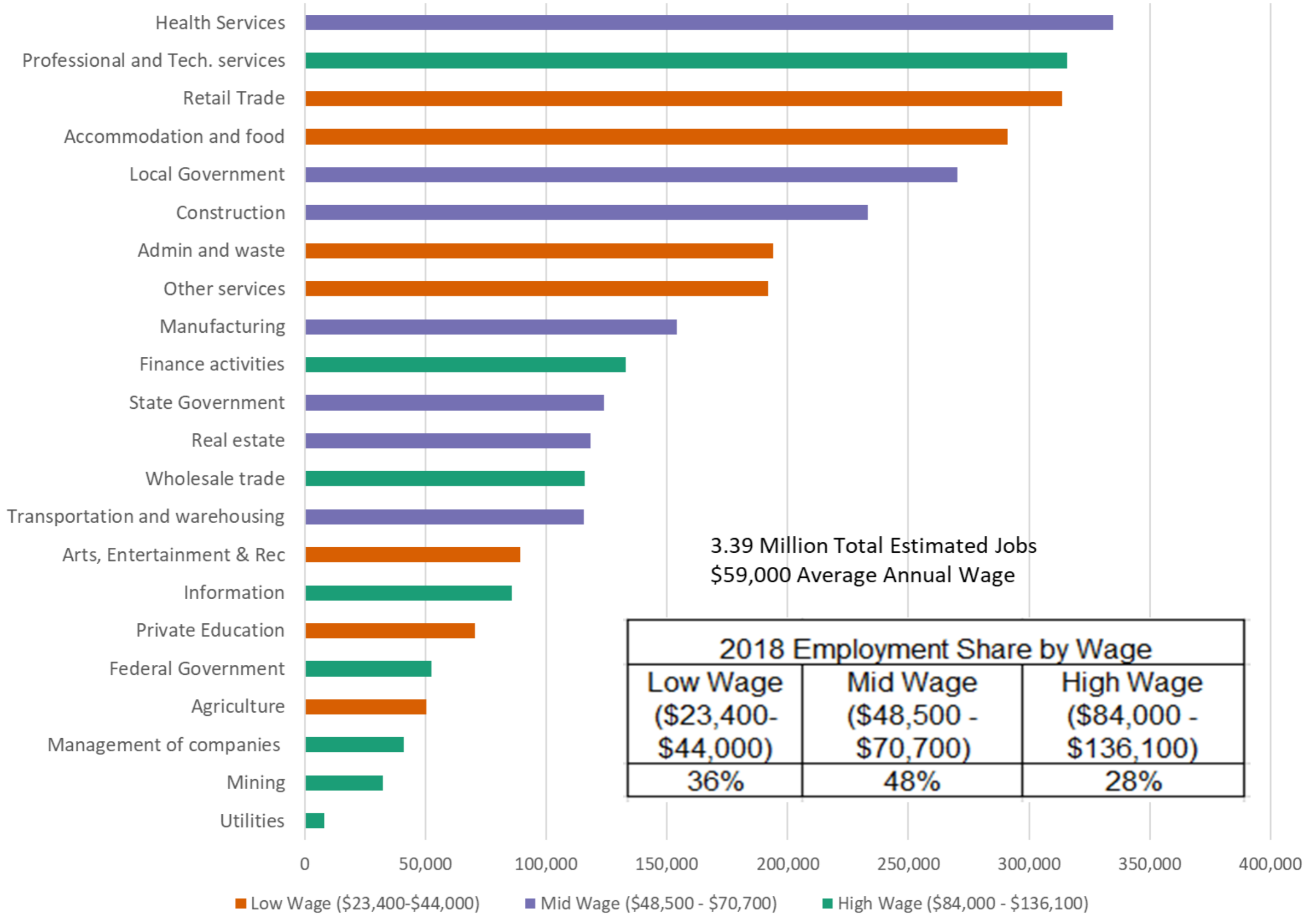
Colorado New Jobs and Net Migration



Jobs Are People



Colorado 2018 Total Employment by Industry & Wage



2018 Employment Share by Wage		
Low Wage (\$23,400- \$44,000)	Mid Wage (\$48,500 - \$70,700)	High Wage (\$84,000 - \$136,100)
36%	48%	28%



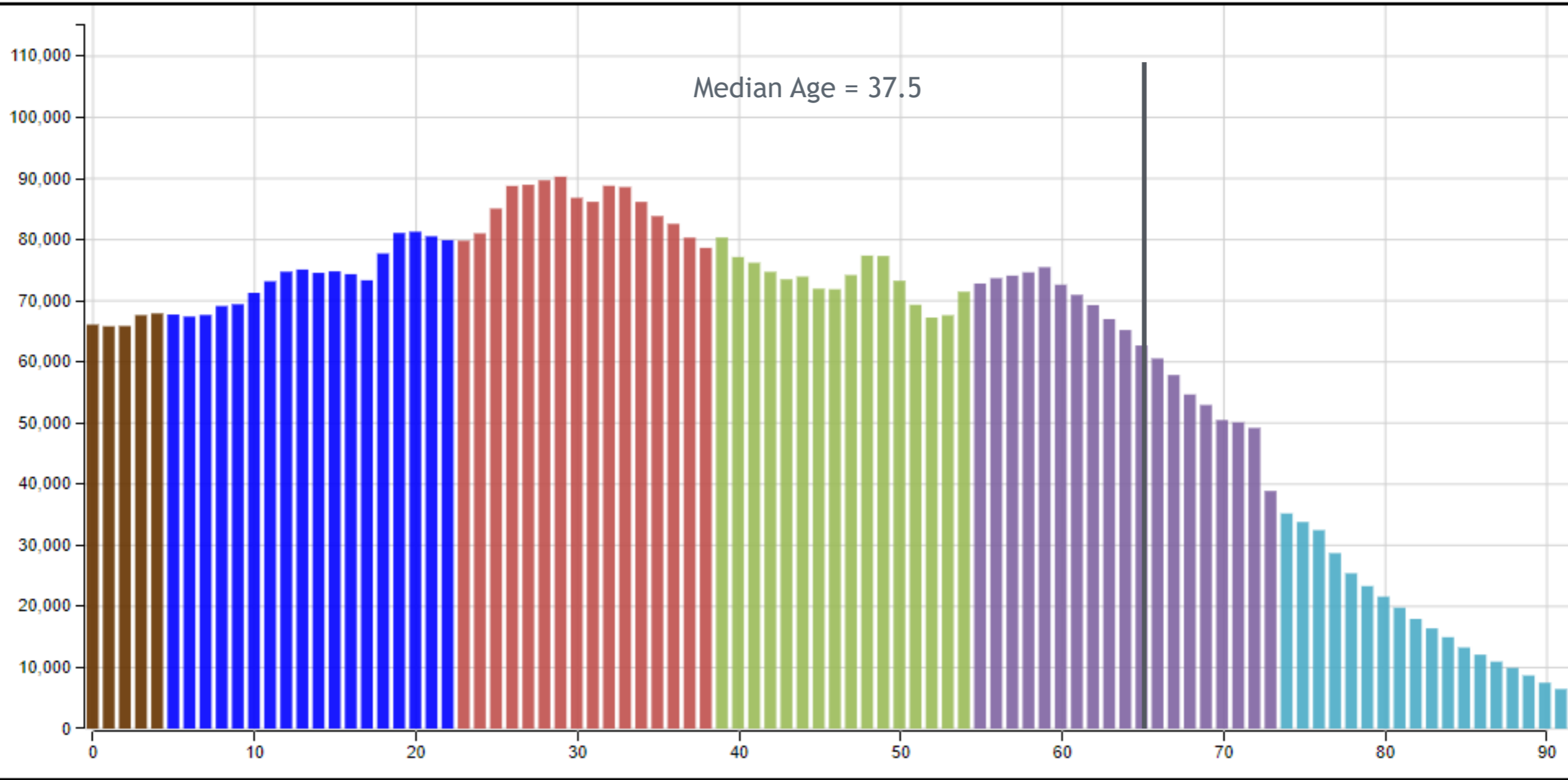
Age Matters

- Preferences - where people shop and what they buy.
- Labor Force
- Service Demands
- Housing - type, size, mobility
- Income



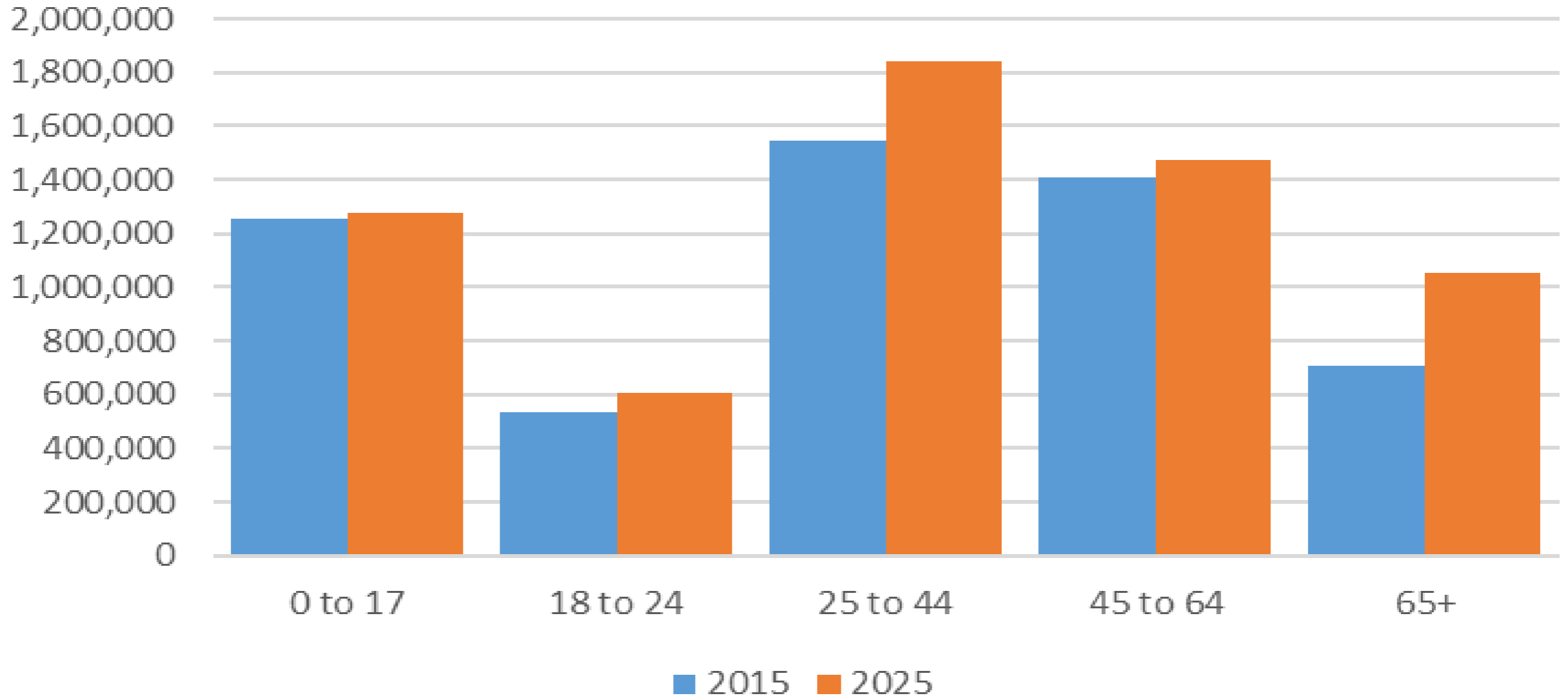
Colorado

2019



- Post Millennials (1997 - 2014)
- Millennials (1981 - 1996)
- Generation X (1965 - 1980)
- Baby Boomers (1946 - 1964)
- Silent Generation (1928 - 1945)
- Greatest Generation (- 1927)
- Future Generations (2030 -)
- Next Generation (2015 - 2029)

Population Forecast by Age

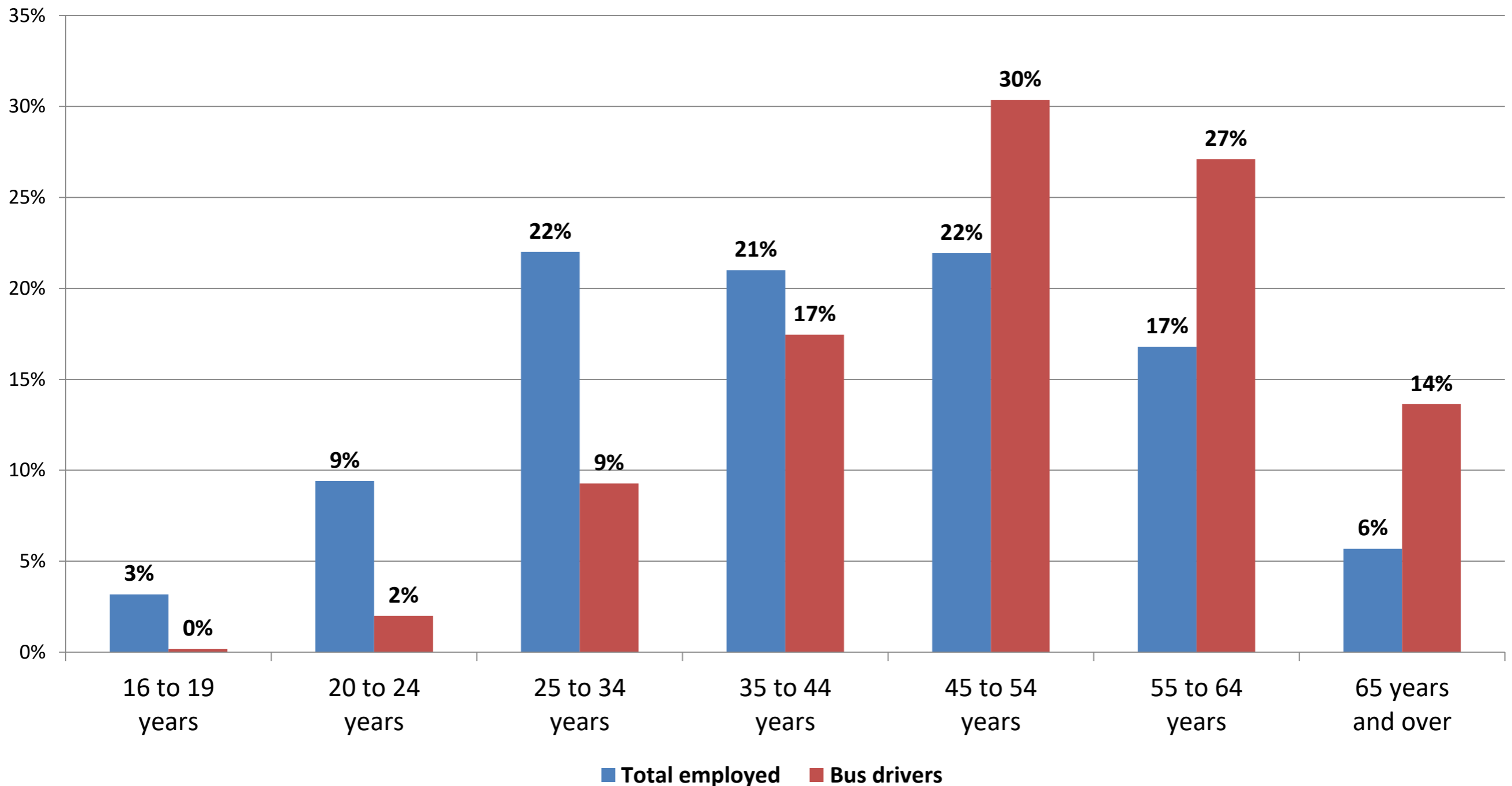


	0 to 17	18 to 24	25 to 44	45 to 64	65+
Pct Ch	2%	13%	19%	5%	48%
Total Ch	23,768	72,072	295,739	64,620	341,924



Looming Driver Shortages?

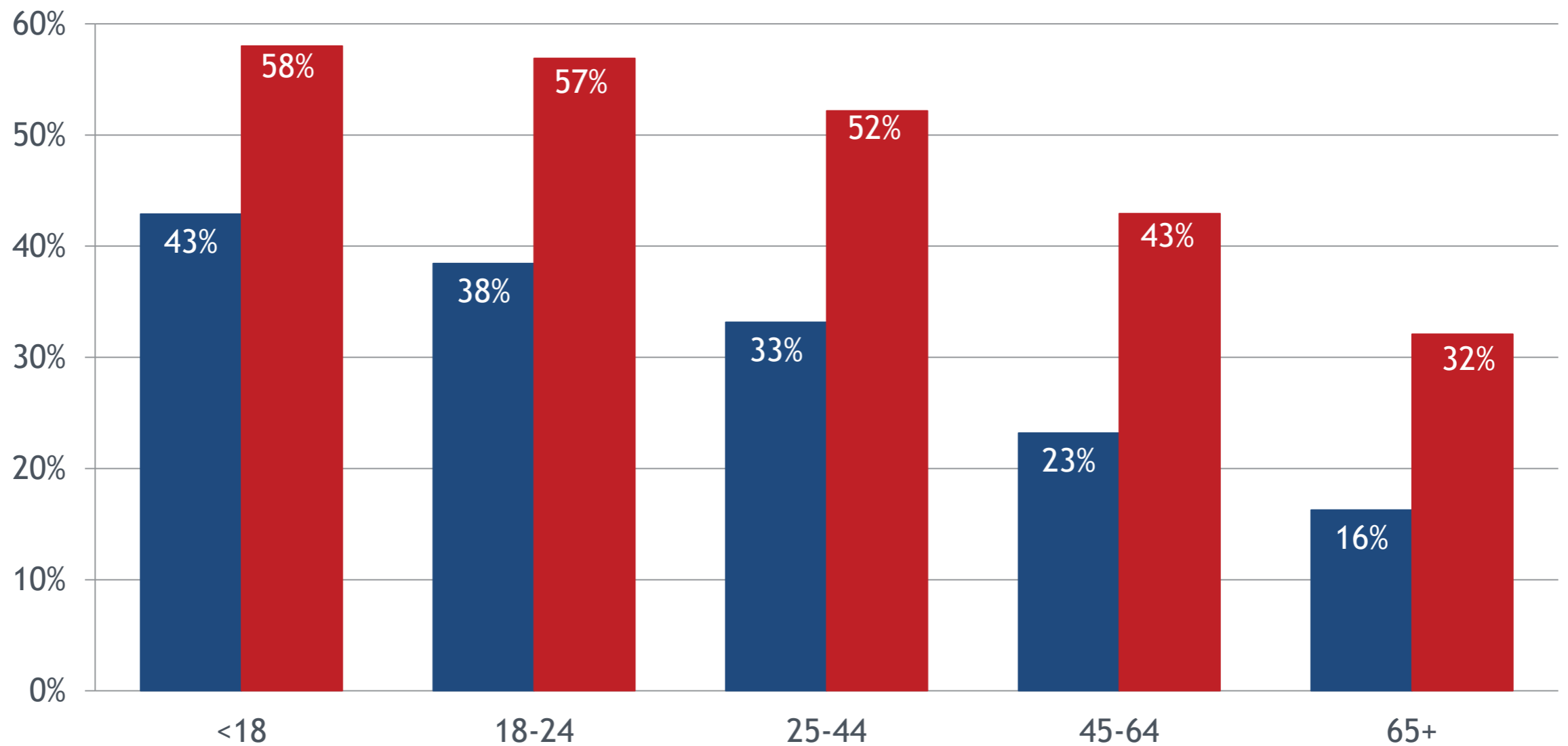
Age Distribution of Bus Drivers vs. All Workers in United States



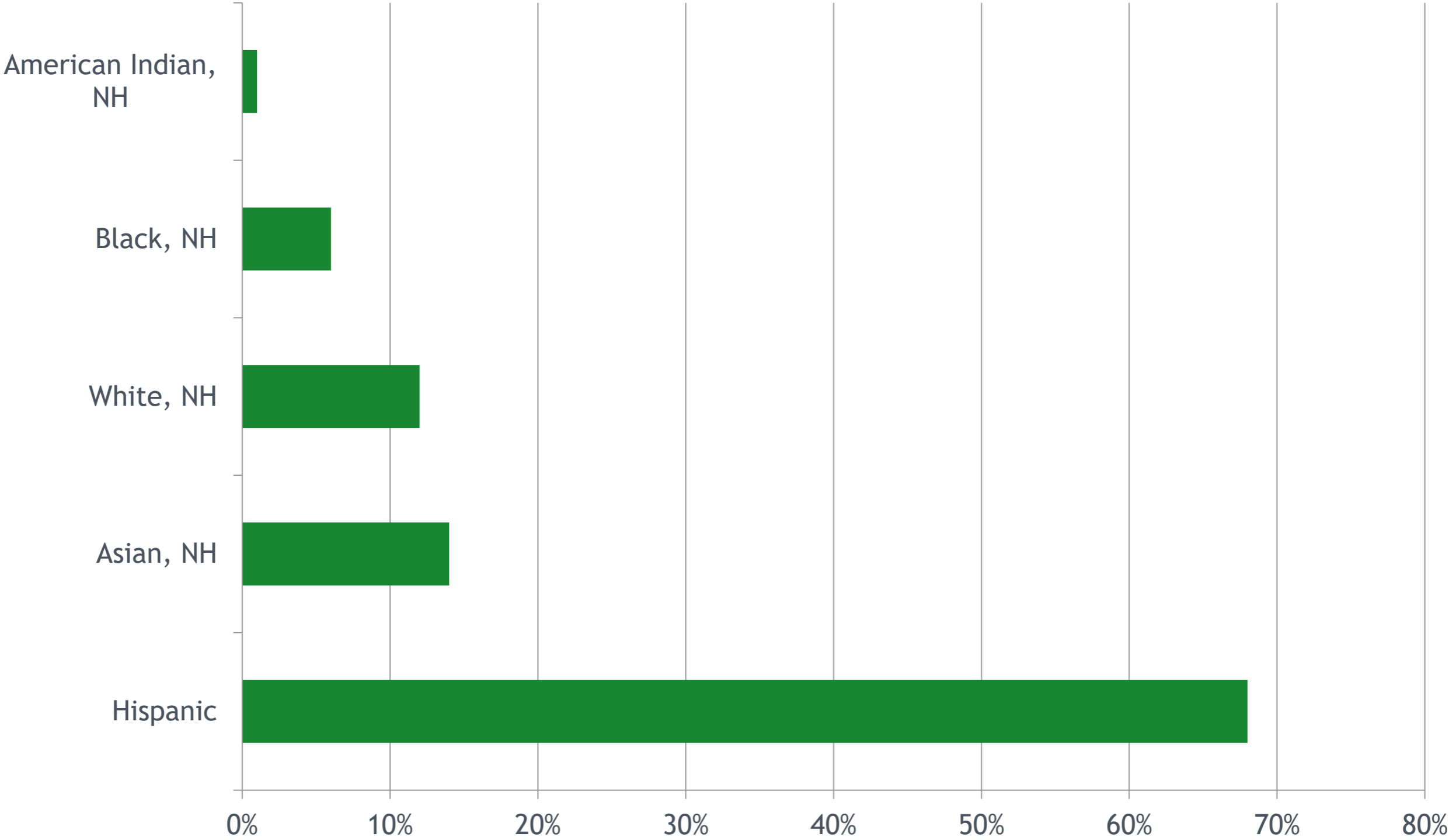
ETHNIC DIVERSITY BY AGE

Hispanic, Black, Asian, and other minority share

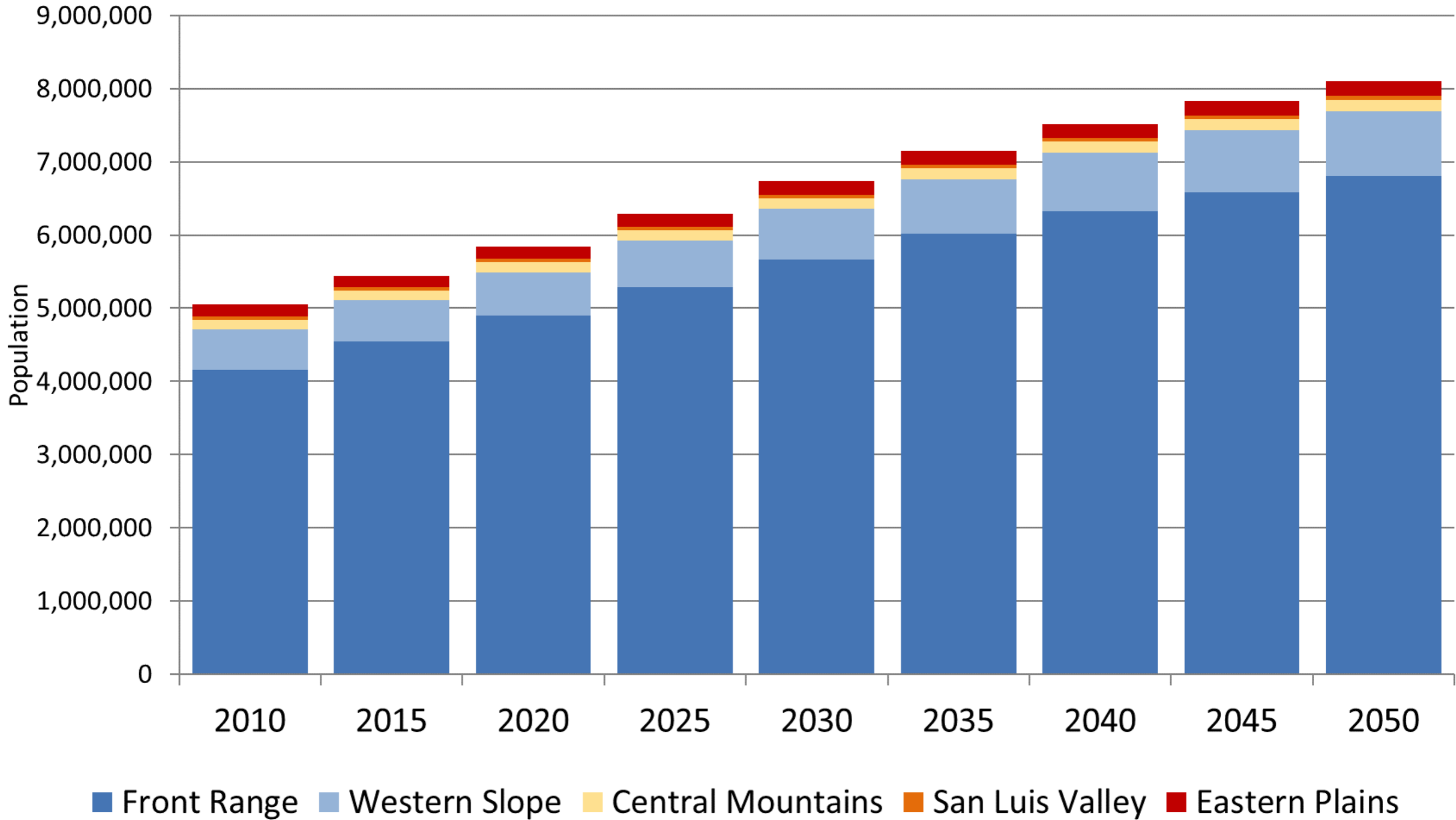
■ 2015 ■ 2050



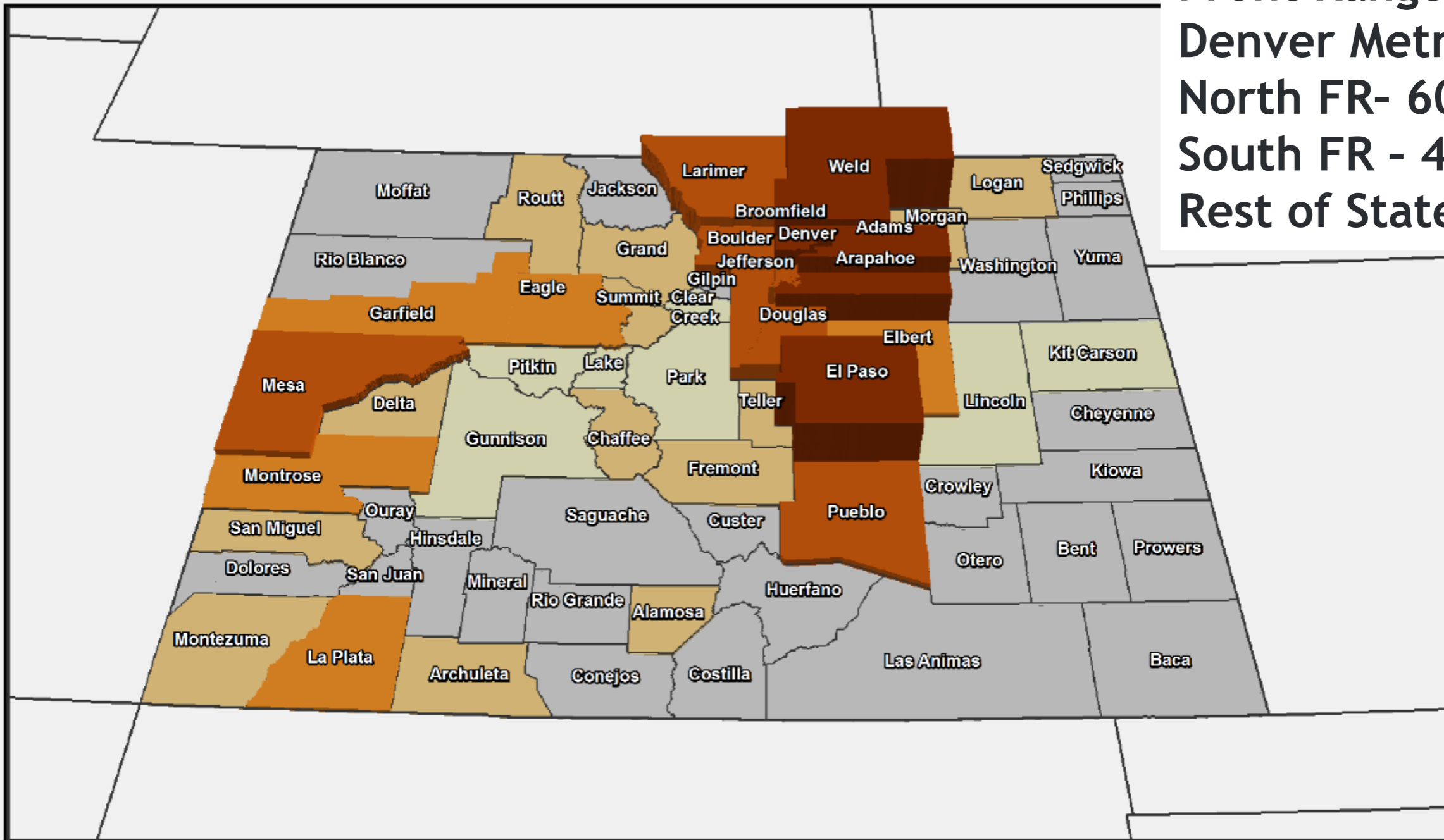
Share of Net Increase in Working Age Population, 2015-2020



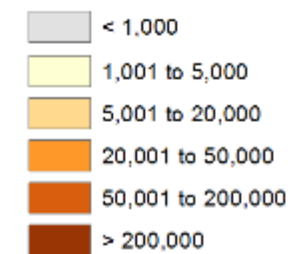
Colorado Population Forecast by Region 2010-2050



State - 2.4 million
 Front Range - 2M
 Denver Metro - 1M
 North FR- 600K
 South FR - 400K
 Rest of State - 400K



Projected Population Change 2018 to 2050



Colorado State Demography Office, 11/2/2018



Risks to the Forecast +/-

- Housing - supply, price, type, location - 5th highest MHV
- National Growth - National Policies - Intl' immigration
- Water
- **Infrastructure/Transportation**
- **State Budget/Policy**
- Aging - labor force, prepared labor force
- Industry changes - boom/bust, competitiveness.
- Natural disasters - nationally



Summary Trends

- Population Growing but slowing
 - Aging, slowing US growth, slowing births
 - Slowing Growth in Labor Force
- Forecast most growth Front Range - Weld, Adams, El Paso
- Migration - driven by economy and need for labor force.
 - Transportation as a career
- Aging - labor force, service demand.
 - Keep people longer, bring them in sooner, career path in transportation
- Race and ethnic diversity increasing
 - Latino larger share of transportation
 - Fastest growth in labor force





Thank you

State Demography Office
Department of Local Affairs
Elizabeth Garner

Elizabeth.garner@state.co.us

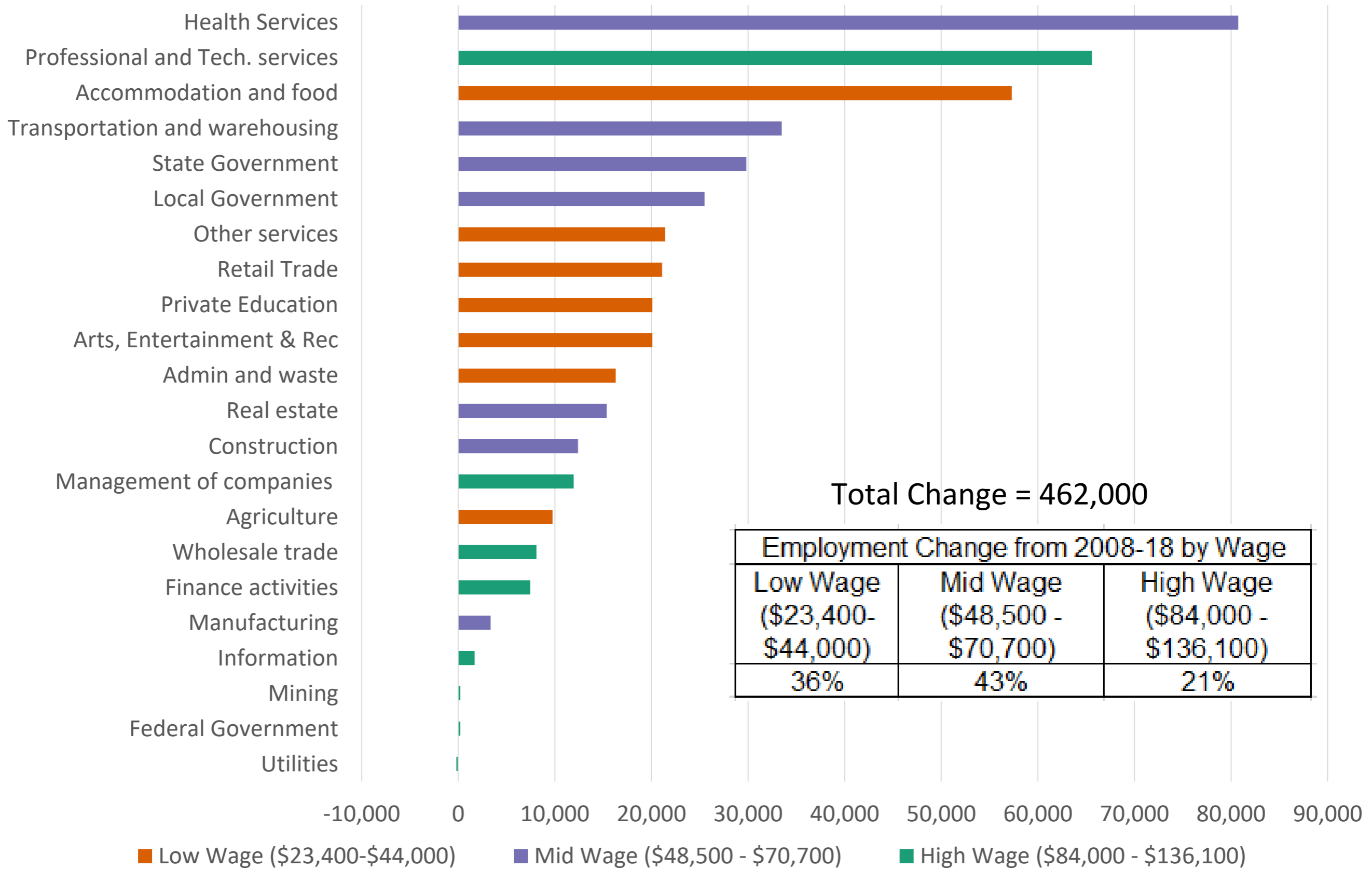
303-864-7750

Demography.dola.colorado.gov



COLORADO
Department of Local Affairs

Colorado Employment Change from 2008 to 2018



Employment Change from 2008-18 by Wage		
Low Wage (\$23,400- \$44,000)	Mid Wage (\$48,500 - \$70,700)	High Wage (\$84,000 - \$136,100)
36%	43%	21%

